



WELCOME TO CLASS,  
PARENTS..



Room #15

MS. ROBERTSON

Availability

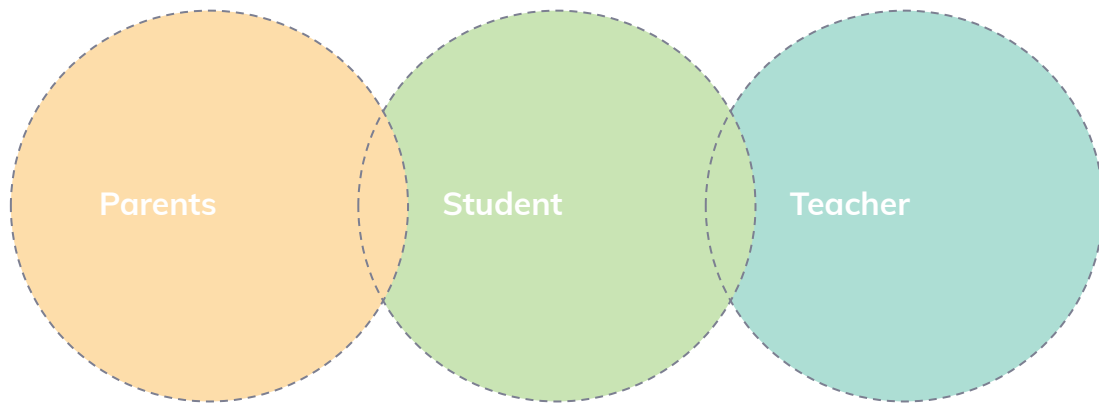
Mon - Fri      7:30AM - 8:15AM  
3:10PM - 3:30PM



Email: robertson.[adriana@cusd80.com](mailto:adriana@cusd80.com)

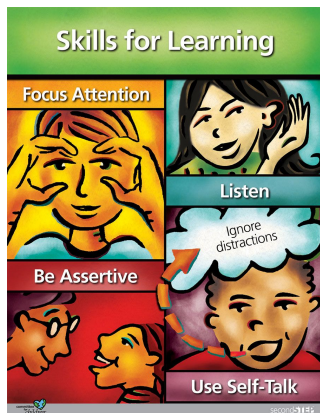
Phone: 480-812-6245

## WE ARE A COMMUNITY



“Education is a **shared** commitment between dedicated **teachers**, motivated students and enthusiastic **parents** with high expectations.”

Bob Beauprez



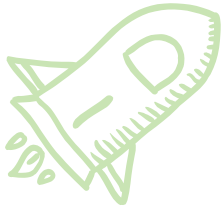
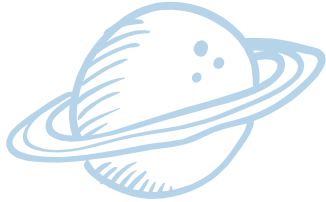
## CLASSROOM EXPECTATIONS



- SEL curriculum
- Character development
- Skills for learning and managing emotions

- Whole class reward
- Work completion

# SCHEDULE



8:15 - 8:30 Arrival

8:30 - 9:00 Morning Meeting

9:00 - 9:45 Foundations/Grammar

9:45 - 10:00 Snack

10:00 - 10:15 Recess

10:15 - 11:30 ELA Centers

11:30 - 12:10 - Recess/Lunch

12:10 - 12:25 Cool Down

12:25 - 1:45 Math

1:45 - 2:25 Social Sciences

2:25 - 2:55 Specials

2:55 - 3:00 Dismissal

## CURRICULUM

# HMH Into Reading - ELA

- Weekly skill
- Weekly stories
- Interactive books
- Comprehension/skill test on Fridays
- ❖ Small group reading will begin mid August.
- ❖ Leveled to individual student needs

### WHAT YOU CAN DO AT HOME:

- Listen to the story sent as a link via email.
- Practice sight/trick words - make it a game

# Fundations

- Multi-sensory phonics program
- Weekly concept skill
- Aligns to weekly spelling words

## WHAT YOU CAN DO AT HOME:

- Ask questions
  - Students should be able to “teach” you
- Practice tapping words (each sound is a tap)

HOW TO TAP WORDS



1	2	3
M	A	T

© Jane Linn, 2012

## CURRICULUM

# Writing

- Thinking maps
- Conventions, fluency, organization, voice, word choice, presentation
- Narratives, informative/explanatory texts, opinion pieces, and research reports

### WHAT YOU CAN DO AT HOME:

- Have students expand their verbal thoughts
- Ask them to give reasons for opinions
- Practice handwriting through note passing

## CURRICULUM

# MyMath

- Daily/Weekly lessons
- Skills build on each goal: Goal Know math facts thru 20 by end of year with automaticity.
- ❖ Small group instruction
- ❖ Math specialists
- ❖ i-Ready

## WHAT YOU CAN DO AT HOME:

- Review \*homework\* page with student
- Practice addition/subtraction math facts
- Prodigy

## CURRICULUM

# Social Sciences

Quarter 1: Citizenship/civics, Geography & Maps

Quarter 2: One world, Many currencies, Exploring matter

Quarter 3: My world

Quarter 4: Extreme Earth

## HOMWORK FOLDERS



- Every **Friday**
  - 15 spelling words
  - Choice board
    - Choose any 4 activities
    - Some require work turned in, others just a signature
- Due **Following Friday**
- ❖ Read **nightly**
  - 15 min. Minimum-small books will be sent home M-W evenings.

## GRADES

100%- 80%= MEETS THE STANDARD

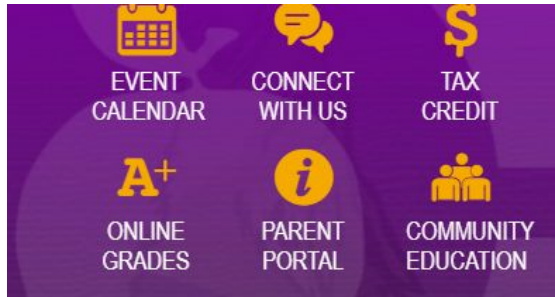
79% - 70% = PROGRESSING

69% - 0% = AREA OF CONCERN

SOME CLASS WORK SENT HOME WILL BE STAMPED (STAR, SMILEY FACE OR OTHER SYMBOL) TO INDICATE TEACHER REVIEW

GRADED ASSIGNMENTS WILL BE FORMALLY SCORED USING POINTS AND/OR PERCENTAGES

## INFINITE CAMPUS:



Chandler Unified School District

Parent Username

Password

Log In

[Forgot Password?](#) [Forgot Username?](#) [Help](#)

[Log in to Campus Student](#)

### Announcements

**Don't have a parent portal account?** [Please click here to create a parent portal account.](#)

Message Center

Today

Calendar

Assignments

Grades

Grade Book Updates

Attendance

Schedule

Academic Plan

Fees

Documents

More

## FIELD TRIPS

\$25 fee for  
the entire  
year



Herberger Theatre



Chandler Museum



MAC Farms

ARIZONA  
SCIENCE  
CENTER



Never stop wondering.  
Never stop imagining.™

## VOLUNTEER/HELP OPPORTUNITIES

### Copy Parent

Classroom copies

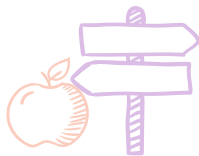
- Weekly or monthly



### Classroom Volunteer

Help out in the classroom

- Small groups
- Reading



### Art Masterpiece

No experience necessary

- 6 lessons
- 45 minutes
- All material and lesson plans provided



# Conley PTO

## What does PTO do?

- Support teachers (appreciation luncheons, conference meals, supplies stipend, and more)
- Fund school activities (scholarships, reindeer games, etc)
- Fun community events
- Fundraisers



## What's coming up next?

### Restaurant Night

At Peter Piper Pizza: Thursday, August 11th (anytime between 4pm - 8pm)

### Our First PTO Meeting

Date: Wednesday, August 17, 2022

Time: 5:30pm

Location: Conley Elementary Media Center



Scan me to  
Order



## Who are we?



Melissa Rivers, President



Jennifer Farino, Treasurer



Tiffani Chavez, Secretary

## What are other ways I can help?

### Ongoing Fundraisers

Fry's Community Rewards: Use organization name Conley Elementary School PTO or Organization Number VG693

Box Tops for Education: Download the app and scan your receipt or clip box tops and send to your child's teacher

School Cents: Submit receipts from Chandler Fashion Center and The Boulevard Shops to earn money for Conley from July 1 - January 15



## Connect with us!

- Email: [ConleyCoyotesPTO@gmail.com](mailto:ConleyCoyotesPTO@gmail.com)
- Facebook: [conleycoyotesptochandleraz](https://www.facebook.com/conleycoyotesptochandleraz)
- Website: <http://www.runpto.com/u/conley/>
- Instagram: [conleycoyoteden/](https://www.instagram.com/conleycoyoteden/)

# CONLEY CAFE

Breakfast: \$2.00

Lunch: \$3.00

Milk/Juice: \$0.75

## CUSD Nutrition School Meals

Due to USDA regulations, school meals will **not** be universally free in the 2022-2023 school year.

### 2022-2023 Meal Prices

K-12 Breakfast:	\$2.00
Elementary Lunch:	\$3.00
Junior High Lunch:	\$3.25
High School Lunch:	\$3.50
Adult Breakfast:	\$2.50
Adult Lunch:	\$3.75



Scan or Click

**Apply for free and reduced meals TODAY!**

Your child may qualify for free or reduced meals. Apply today by clicking or scanning the QR code above.

### Where can I view the menu?

Check out our new online menu platform at [cusdnutrition.com](https://cusdnutrition.com).



The MealViewer app can be found in the App store!



Scan or Click

### My School Bucks Student Account

- Utilize for school meal and a la carte purchases
- Fast, easy, online
- Ability to track purchases
- Receive low-balance reminders
- Option to automatically re-load account funds

### Board-Approved Charge Policy

To view our charge policy, please visit [cusdnutrition.com](https://cusdnutrition.com)

For more information, visit our website at [cusdnutrition.com](https://cusdnutrition.com) or email us at [atnutritioncusd80.com](mailto:atnutritioncusd80.com).  
This institution is an equal opportunity provider.

## MY SCHOOL BUCKS ACCOUNT:



Families Schools Partners

## School payments made easy

From the cafeteria to the classroom, pay anytime, anywhere from your mobile phone or computer.

[Sign Up Free](#)

[Download App →](#)

## FREE AND REDUCED LUNCH:



### It's More Than a Meal Application!

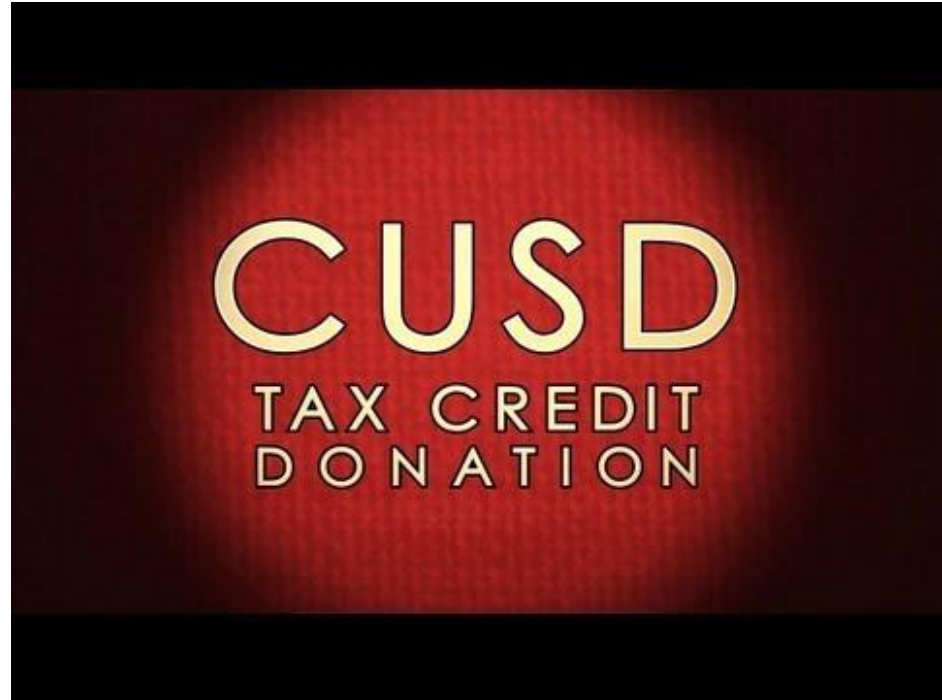
The information collected on meal applications for the National School Lunch Program (NSLP) can do more than just provide free and reduced-price meals.



## APPLY TODAY



## TAX CREDIT



“

“Alone we can do so  
little; *together* we can  
do so much.”

-Helen Keller



THANK YOU FOR COMING!!

Any questions?

[robertson.adriana@cusd80.com](mailto:robertson.adriana@cusd80.com)